

WEST MANOR ELEMENTARY SCHOOL

Weekly Construction Progress Report
Week 02/15/2021-02/19/2021



Balfour Beatty

Current Activities 02/15/21-02/19/21

- Continue Gymnasium addition roof decking and edge angle.
- Continue gymnasium monumental stair installation.
- Continue MEPF overhead rough-in at Renovation. (Admin and East Wing)
- Continue installation of mechanical and electrical equipment.
- Continue interior metal framing at renovation. (Admin and East Wing)
- Continue interior masonry at renovation. (Patch work, openings, & Media Center)
- Continue exterior masonry at gymnasium. (North, East, and West Walls)
- Continue paint and prep at renovation.
- Continue roofing replacement. (Admin and Entrance Additions)
- Continue in wall insulation. (Admin Area)
- Continue hang/tape/finish drywall. (Admin Area and East Wing)
- Complete hard ceiling framing at East wing.
- Complete ceiling grid in SW wing & Cafeteria and MEP trims.
- Complete slab on grade at classroom addition.
- Complete admin addition steel.
- Complete plumbing rough in at gymnasium
- Start door frame installation at renovation.

Upcoming Activities 02/22/21-02/26/21

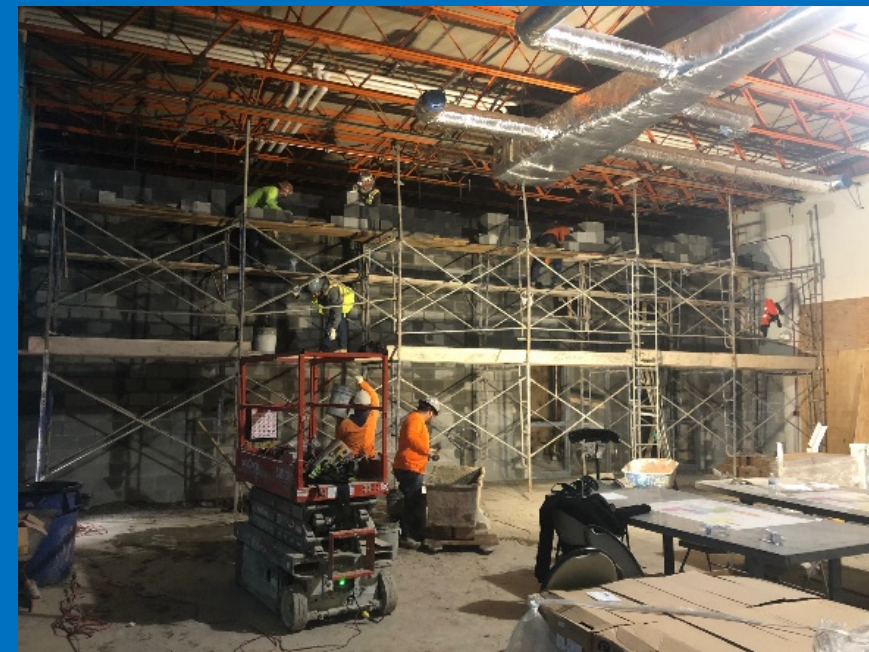
- Complete gymnasium addition roof decking.
- Start classroom addition steel erection.
- Continue MEPF overhead rough-in at Renovation.
- Continue installation of mechanical and electrical equipment.
- Continue ceiling grid and MEP trims at renovation.
- Continue foundation wall waterproofing and start air barrier on exterior CMU walls.
- Continue interior metal framing at renovation.
- Continue hang/tape/finish drywall.
- Continue interior masonry at renovation.
- Continue exterior masonry and start interior masonry at gymnasium.
- Continue wall prep and paint.
- Continue roofing replacement.
- Start metal framing at gymnasium addition and main entrance.



Balfour Beatty



Classroom Addition Slab on Grade



New Media Center CMU

Activities



Plumbing Rough-in at Gymnasium



Monumental Stair Installation



SW Wing Hard Ceilings



Kitchen Ceiling Grid and Lighting



Admin Addition Drywall Hang/Tape/Finish



East Wing Hard Ceiling Framing

Project Schedule

- Schedule Status: On Schedule



Project Financials

- Construction GMP: \$11,000,000
- Progress Billed to Date: \$4,407,017
- Budget Status: Within GMP

